

The Implant and Implantology Revolution



Premium Quality
Technologies



Hello!
Let's take a tour
of our product
catalogue



Company Profile

BHI is an Innovative, Professional and Dynamic Dental Implant Manufacturer that strives itself on producing Dental Implants at the forefront of the dental market.

BHI is part of a dental group that has a success record of more than 30 years' experience in the dental, implant and implantology field. Using this vast experience that we have gathered over the years we have created a revolutionary product that is predictable, easy to use and is easily integrated into the bone.

Our team of expert developers and engineers push themselves on a daily base making sure that we are on the forefront of the implant world. This is what helps us produce products with great performance and high quality.

Our professional team of quality controllers makes sure that our clients get the best implant products they can get. Our products go through more than 12 different stages of quality controlled checks, before going out in to the market and that is why we are ISO 13485:2012 certified.

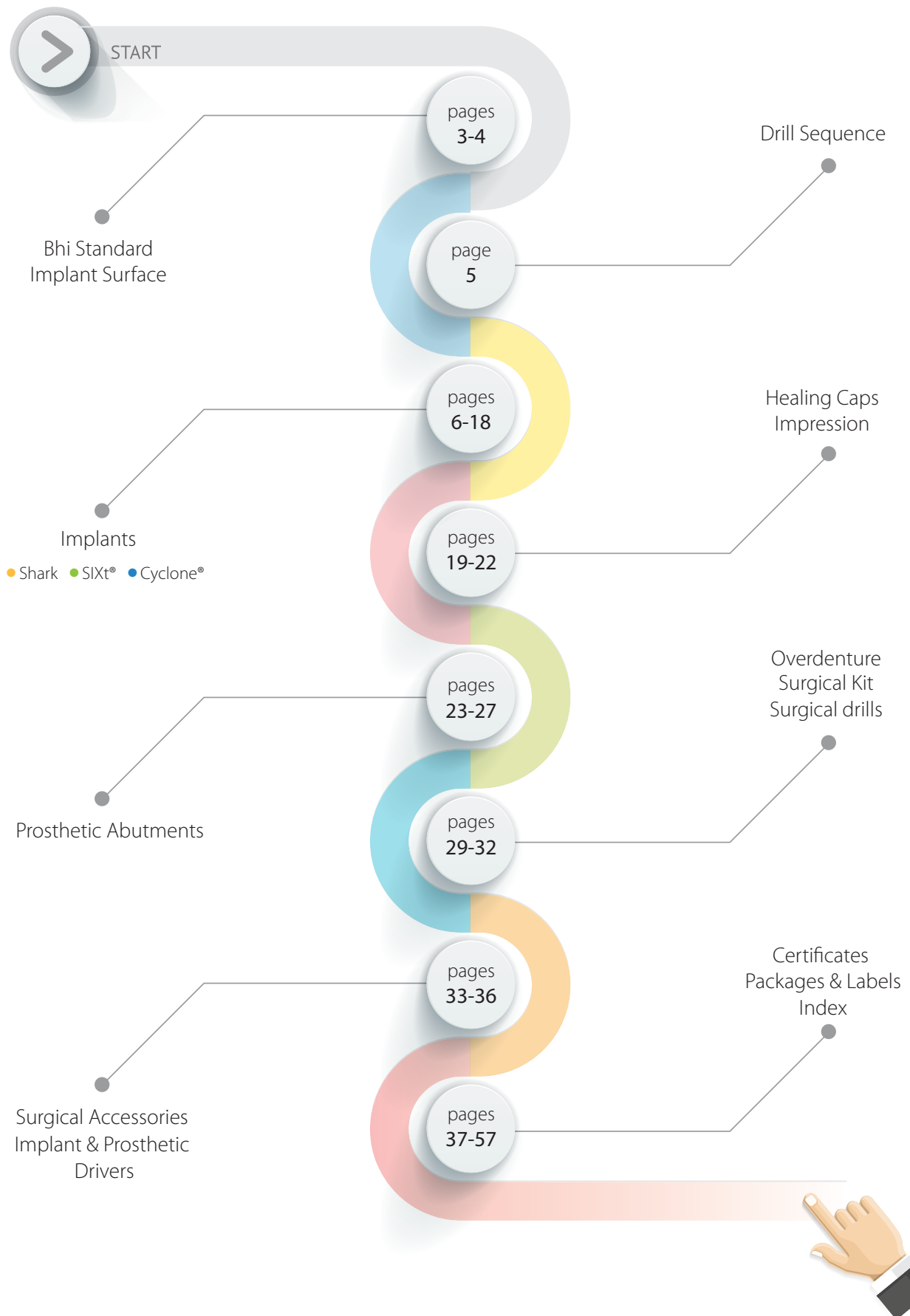
Bhi holds a CE Mark for Europe
and our products are cleared for marketing in the USA.

Our expert Sales and Marketing team makes sure that our product and sales training are of top quality. BHI runs courses around the world for all levels of doctors, weather you are a beginner or an expert. These courses are run by our professional in house team of oral implantologists.

With all of the above and a world wide support system there is no wonder why BHI is a force to be reckoned with.

Hope to see you soon in your rooms.
The BHI team

Table of Contents





Bhi Standards

BHI uses Grade 23 Western Titanium to manufacture its implants, this dense material that resembles bone has proven to be strong and highly successful in the fabrication of dental implants. The material is highly resistant to corrosion as it immediately forms a stable oxide film when exposed to oxygen in air or water, this protects the implant from any further oxidation and corrosion.

The BHI Implants manufacturing facility operates in conformity with the ISO 13485:2012 certificate. BHI has passed inspections from the European Notified Body (CE 0483) on numerous occasions for the approval of implant design, manufacturing and quality assurance systems. BHI is cleared for marketing and selling in the USA, and holds a CE Mark for Europe.

Our BHI products are of a very high quality and with our worldwide reach we offer a great product with incredible after sales service where needed.

All of BHI implants come with a lifetime guaranty in order to give our partners a piece of mind when using the BHI range.

Implants Surface

From the beginning, Bhi has followed several research studies conducted in order to discover the optimal implant surface treatment. The critical implant surface treatment is needed in order to attain the correct surface roughness and the highest purity levels in order to achieve optimal Osseointegration, by increasing the rate of Bone to Implant Contact (BIC).

Due to the fact that our implants achieve high BIC, it increases the healing process and growths tissue around the implant while eliminating the possibilities of post-surgery infection.

Bhi has developed a highly successful implant surface treatment that gets the right balance for implant surface roughness.

Our implants are grade 23 Titanium Alloy Ti 6Al-4V ELI with SLA surface that uses sandblasting and acid etching to create the Bhi implants surface.

Bhi routinely uses SEM/EDS/XPS surface analysis to verify that the desired macro and micro structures were achieved (surface roughness and morphology) and to assess the Bhi implant surface in order to verify that no particles from processing remained. All laboratory tests are performed by certified third party laboratories and compared to international leading competitors as a reference.

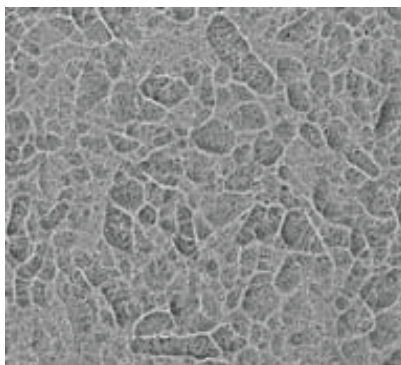
Bhi's cleaning process is of top priority, therefore, BHI implants have a debris free surface which has proven to achieve optimal Osseointegration and attain highest implant surface purity levels.

X25



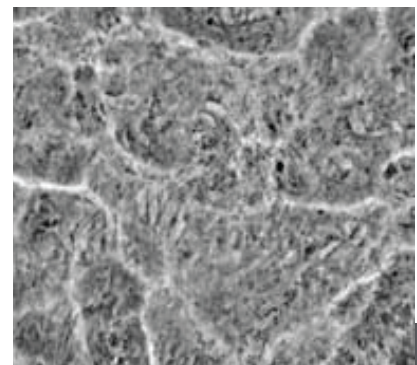
Exceptionally clean surface, no contaminants as visible on the whole implant's surface at X25

X500



Exceptionally clean surface, no contaminants as visible on a random surface fragment at X500

X2000



Advantageous microstructure with 20-40 porous of roughly 10 microns diameter, within the surface area of 100X100 microns, while the pores' walls and bottom is cratered by small pores of 1-3 microns diameter

Drill Sequence

BHI Drill Quality

- All drills are manufactured from high quality surgical materials
- Drills are marked by laser for easy identification
- Depth marks are shown with grooves and laser
- All drills undergo an anti-rust process
- BHI drills are all color coded
- BHI drills are all external irrigation



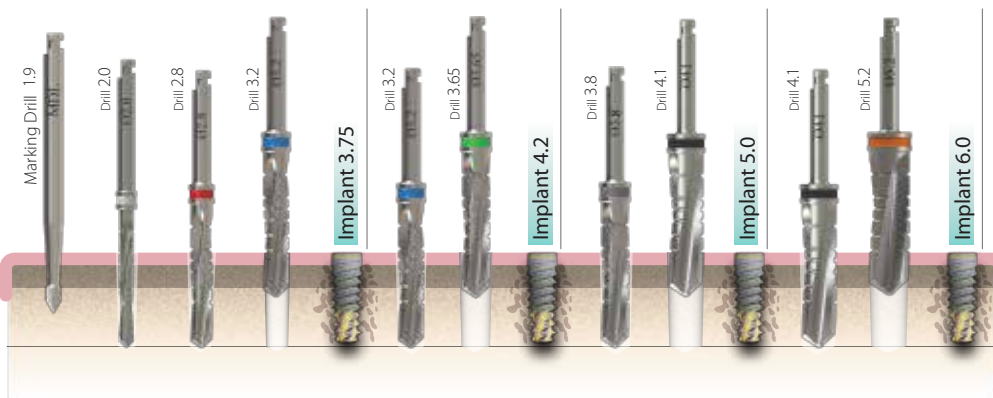
All our products under-go inspections to meet precise industrial standards:

- Cleaning test – To ensure no risk is posed of transmitting infectious microorganisms.
- Steam sterilization test – To inspect the effectiveness of sterilization process on our products.
- Autoclave test – The test includes 20 autoclave cycles, then a thorough inspection for corrosion.
- Salt spray test – To inspect the durability to corrosion according ASTM A967-05.
- Drilling test – To inspect drill sharpness.

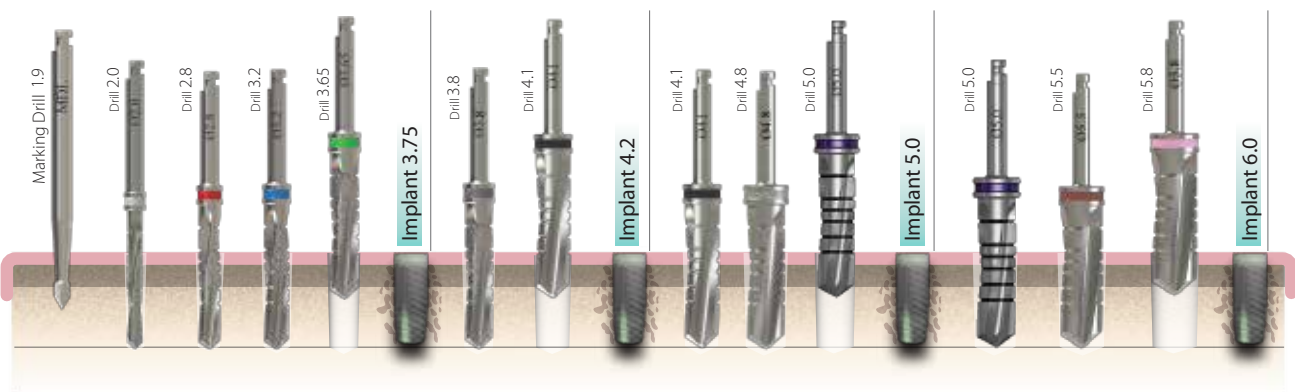
All procedures recommended by BHI Implants should not replace the dentist's/surgeon's judgment & experience

The following sequences are compatible with all of our implants

Bone Type D - III & IV

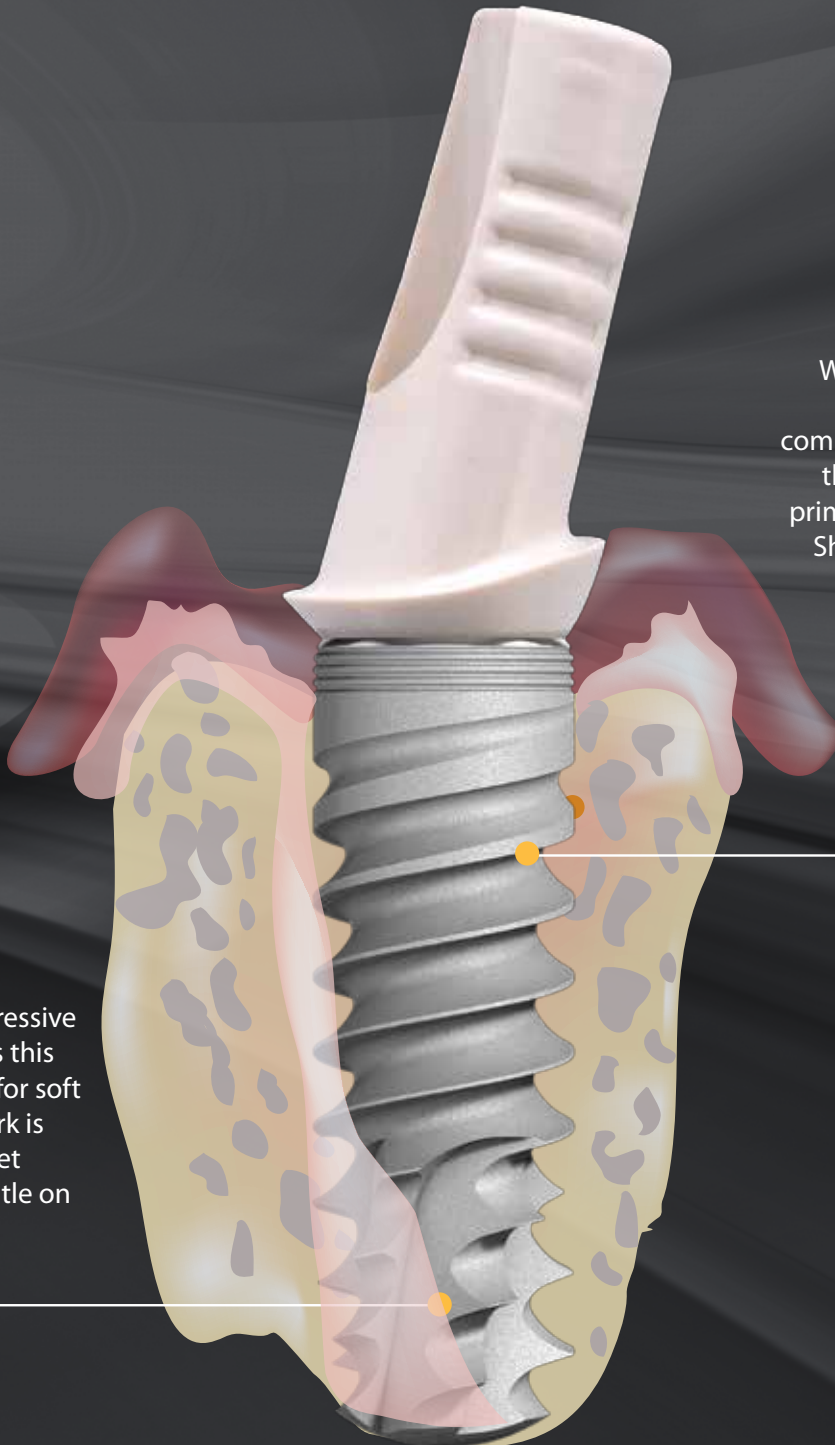


Bone Type D - I & II



Features & Benefits

- The Shark Implant - Reliability and Stability is now here
- The Shark Implant helps you preserve bone while easily navigating the Osteotomy of all bone type



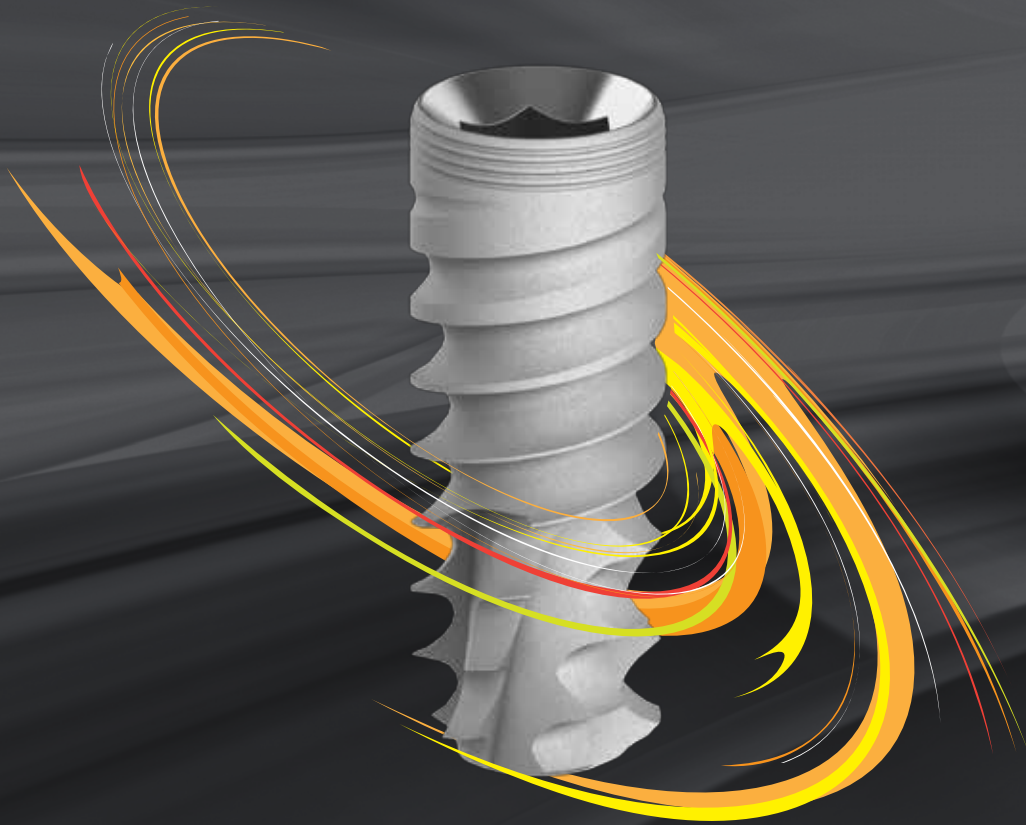
With downwards facing threads this implant compresses the bone towards the apex creating great primary stability. Making the Shark a great implant for immediate loading.

The Shark's aggressive threads makes this implant perfect for soft bone the shark is powerful, yet remarkably gentle on the bone.



Shark

Achieve great primary stability
for immediate loading where other
implants might fail



• • •
With a "Shark tooth" design, this implant is a "Cut" above the rest.

• • •
The Thread design optimizes the bone's quality

• • •
Best for immediate Placing

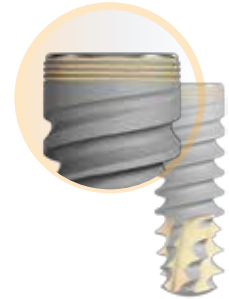
The Shark Implant

The Shark implant is BHI's most aggressive tapered implant. With a "Shark-Tooth" cut at the apical part of the implant this implant is unbelievable in soft bone. With this great design the Shark is fit for all different applications, the aggressive design helps the Shark achieve great primary stability for immediate loading where other implants might fail.



Coronal Part

The Shark's coronal part has 5 micro rings and wide threads, allowing a deep platform switching, hence reducing bone resorption and crestal stress for better load distribution.



Implant Threads

The Shark implant threads are double threaded (2 X 2.4mm). The unique thread design enables fast insertion, change of direction during insertion, bone condensing and self-tapping.



Implant Body

The implant body is based on a tapered body while the envelope is a cylindrical design, this helps achieve superior osseointegration, initial stability and easy insertion.



Internal Hex

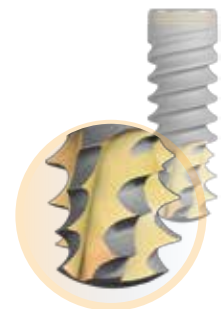
The internal hex connection has a high-precision structure that serves as a platform for all diameters, creating the perfect implant-abutment connection and enabling a simple restoration process.

The Internal Hex size is 2.43 mm.

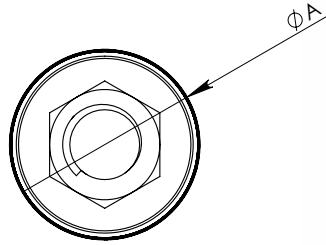
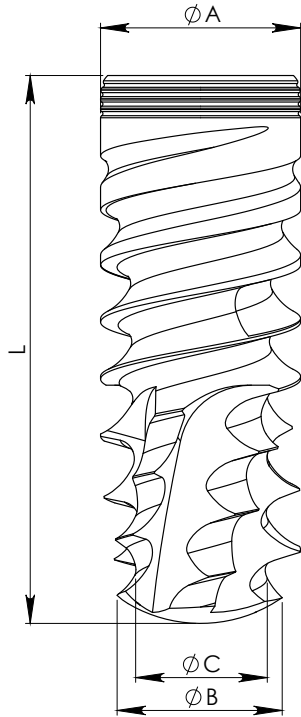


Apical Part

The apical part has deep and sharp starting threads, which efficiently cut ridges reaching the bottom of the implant, enabling easy bone penetration for initial stability and immediate loading for all bone types.



The Shark



Ø 3.75	Ref No.	L	A	B	C	
	BH-SH308	8	3.8	3.8	2.3	□
	BH-SH310	10	3.8	3.8	2.3	■
	BH-SH311	11.5	3.8	3.8	2.3	■
	BH-SH313	13	3.8	3.8	2.3	■
	BH-SH316	16	3.8	3.8	2.3	■

Ø 4.2	Ref No.	L	A	B	C	
	BH-SH408	8	4.2	4.2	2.7	□
	BH-SH410	10	4.2	4.2	2.7	■
	BH-SH411	11.5	4.2	4.2	2.7	■
	BH-SH413	13	4.2	4.2	2.7	■
	BH-SH416	16	4.2	4.2	2.7	■

Ø 5.0	Ref No.	L	A	B	C	
	BH-SH508	8	5.0	5.0	3.4	□
	BH-SH510	10	5.0	5.0	3.4	■
	BH-SH511	11.5	5.0	5.0	3.4	■
	BH-SH513	13	5.0	5.0	3.4	■
	BH-SH516	16	5.0	5.0	3.4	■

Ø 6.0	Ref No.	L	A	B	C	
	BH-SH608	8	6.0	6.0	4.5	□
	BH-SH610	10	6.0	6.0	4.5	■
	BH-SH611	11.5	6.0	6.0	4.5	■
	BH-SH613	13	6.0	6.0	4.5	■
	BH-SH616	16	6.0	6.0	4.5	■

Features & Benefits

- Creates long lasting conditions for bone-level maintenance
 - Both one-stage or two-stage implant procedures

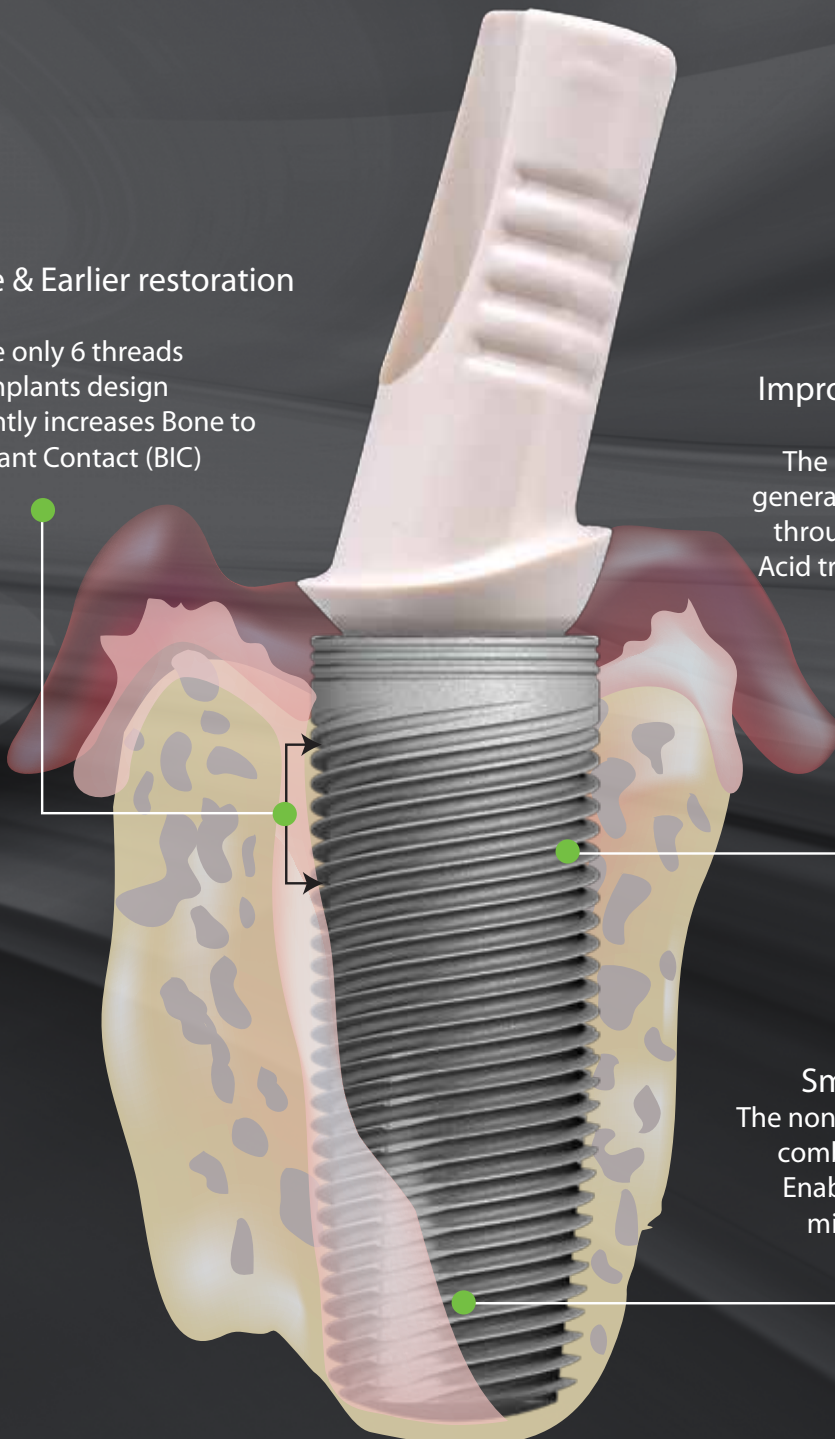
Immediate & Earlier restoration

The only 6 threads implants design
Significantly increases Bone to Implant Contact (BIC)

Improved osseointegration

The implant surface process generates surface microstructure through optimal blasting and Acid treatment which enhanced osseointegration.

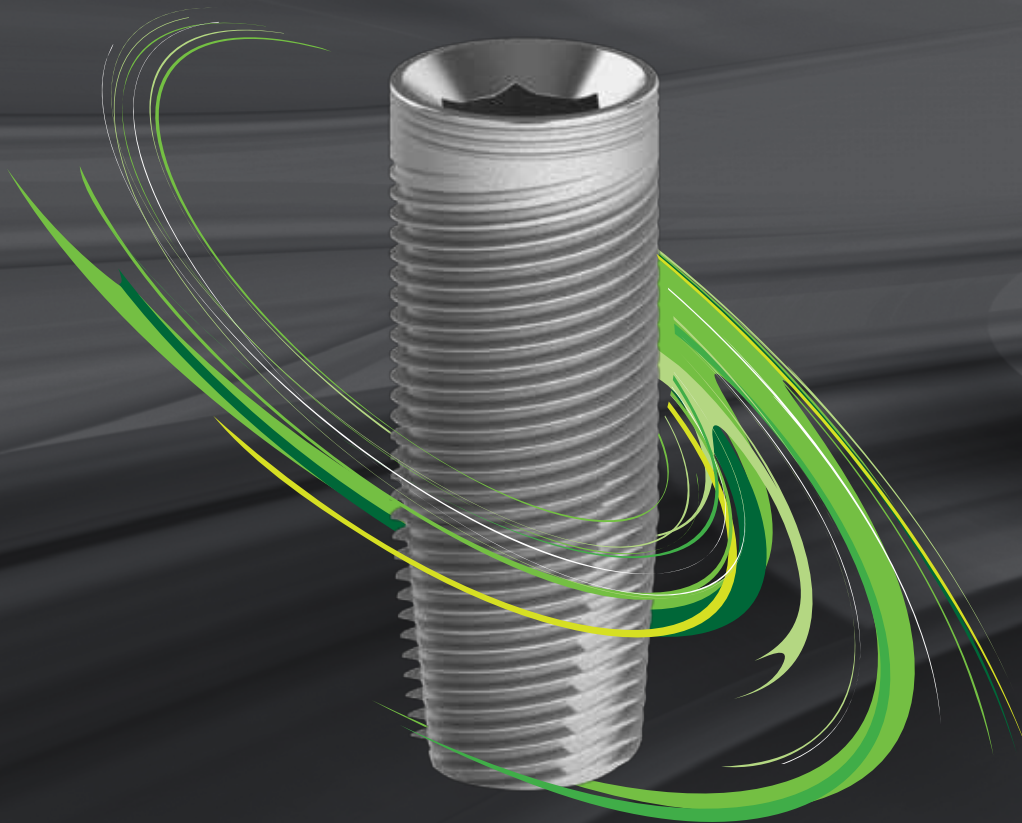
Smooth penetration
The non aggressive threads design combined with a 2 mm step
Enables easy insertion with minimal bone's trauma





SIXt[®]

The unique 6 threads achieves faster bone to implant contact (BIC), easy insertion with minimal bone's trauma



The only 6 threaded implant



Bigger surface for better osseointegration



Achieve Early Restoration

SIXt[®] Implant

The SIXt Implant is a six threaded cylindrical implant with tapered implant advantages.

The SIXt was designed for all applications including hard and soft bone. With its unique semi flat apex the SIXt is great for sinus lifts.

This Genius implant gives you a nice smooth penetration due to the great threads design, unlike the regular cylindrical implant which have 1.2mm threads the SIXt is uniquely designed with 2mm threads that have 6 sub-threads. This helps with smoother insertion, less trauma to the bone and better primary stability.



Implant Threads

The SIXt's implant threads are double threaded (2mm with six sub threads) for efficient implantation. The threads differ from top crown to apex, at the coronal part the threads are thicker trapezoid, in the middle the threads are thinner square shaped and at the apical part the threads are V-shaped. This thread design helps with fast insertion, bone condensing and self-tapping.



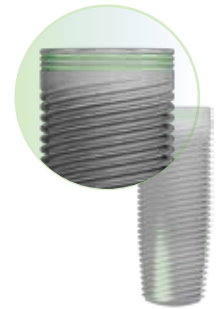
Internal Hex

The internal hex connection has a high-precision structure that serves as a platform for all diameters, creating the perfect implant-abutment connection and enabling a simple restoration process.



Coronal Part

The coronal part surface with its 3 micro rings is rough towards the top of the implant, reducing crestal stress for better load distribution.



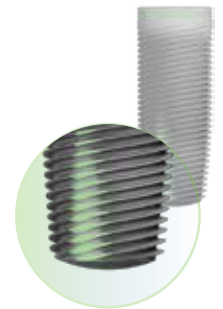
Implant Body

Implant body is cylindrical in the lower part and slightly conical in the apical part, to achieve initial stability and easy insertion.



Apical Part

The apical part has a straight apical board with sharp threads to enable self tapping, self drilling and easy insertion.



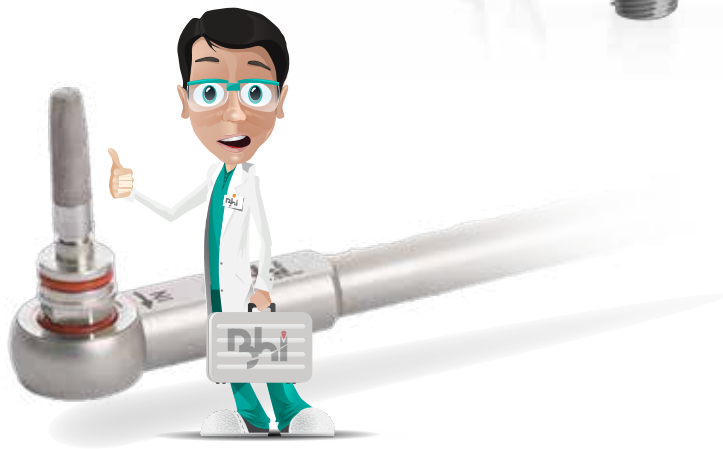
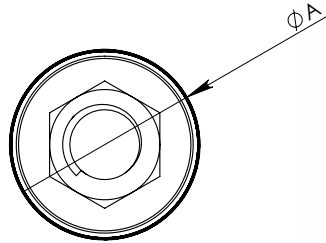
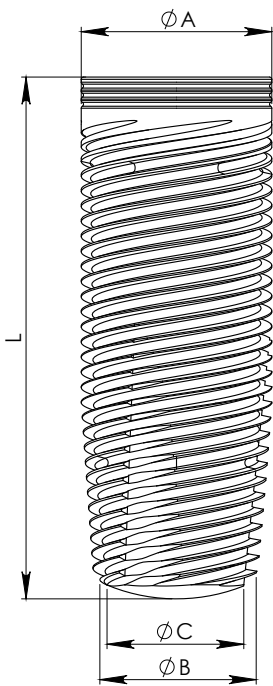
Early restoration

BHI's SIXt Implant has significantly more implant surface than any other implant on the market. This is due to the SIXt's unique 6 threads design, this helps with achieving faster Bone Implant Contact, which helps with earlier restoration. The SIXt is the only implant in its field at the moment with 6 threads.

Easier insertion

Due to the SIXt's unique 6 threaded design the insertion of the implant is smoother and easier, with less chance of overheating the bone. Every 3600 rotation of the SIXt implant inserts the implant 2mm into the bone

The SIXt[®]



Ø 3.75	Ref No.	L	A	B	C	
	BH-C308	8	3.75	3.3	2.57	□
	BH-C310	10	3.75	3.3	2.57	■
	BH-C311	11.5	3.75	3.3	2.57	■
	BH-C313	13	3.75	3.3	2.57	■
	BH-C316	16	3.75	3.3	2.57	■

Ø 4.2	Ref No.	L	A	B	C	
	BH-C408	8	4.2	3.7	3.0	□
	BH-C410	10	4.2	3.7	3.0	■
	BH-C411	11.5	4.2	3.7	3.0	■
	BH-C413	13	4.2	3.7	3.0	■
	BH-C416	16	4.2	3.7	3.0	■

Ø 5.0	Ref No.	L	A	B	C	
	BH-C508	8	5.0	4.5	3.8	□
	BH-C510	10	5.0	4.5	3.8	■
	BH-C511	11.5	5.0	4.5	3.8	■
	BH-C513	13	5.0	4.5	3.8	■
	BH-C516	16	5.0	4.5	3.8	■

Ø 6.0	Ref No.	L	A	B	C	
	BH-C608	8	6.0	6.0	5.2	□
	BH-C610	10	6.0	6.0	5.2	■
	BH-C611	11.5	6.0	6.0	5.2	■
	BH-C613	13	6.0	6.0	5.2	■
	BH-C616	16	6.0	6.0	5.2	■

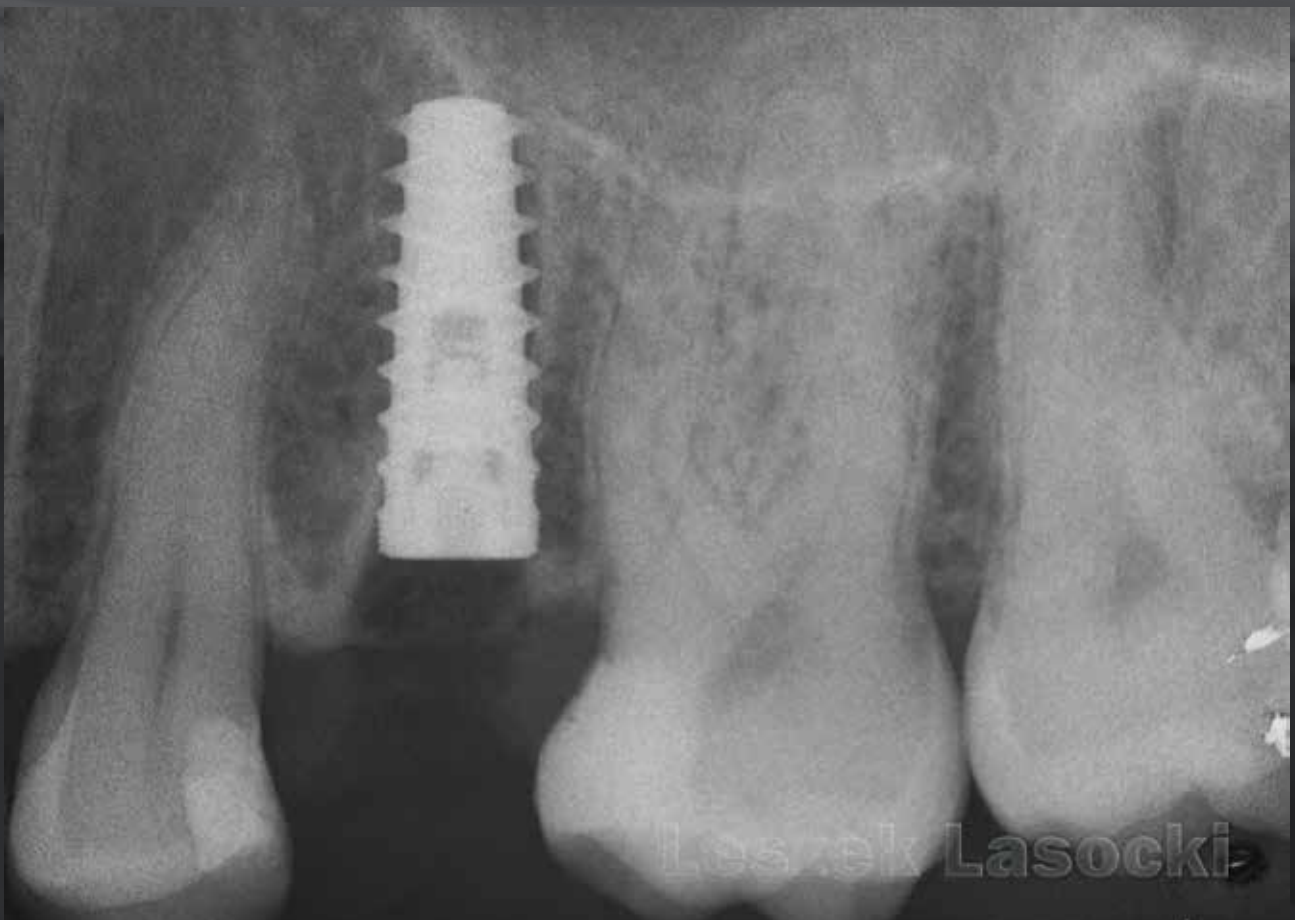
Drilling

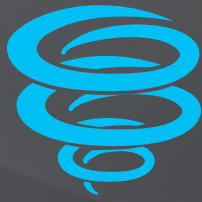


Implant insertion



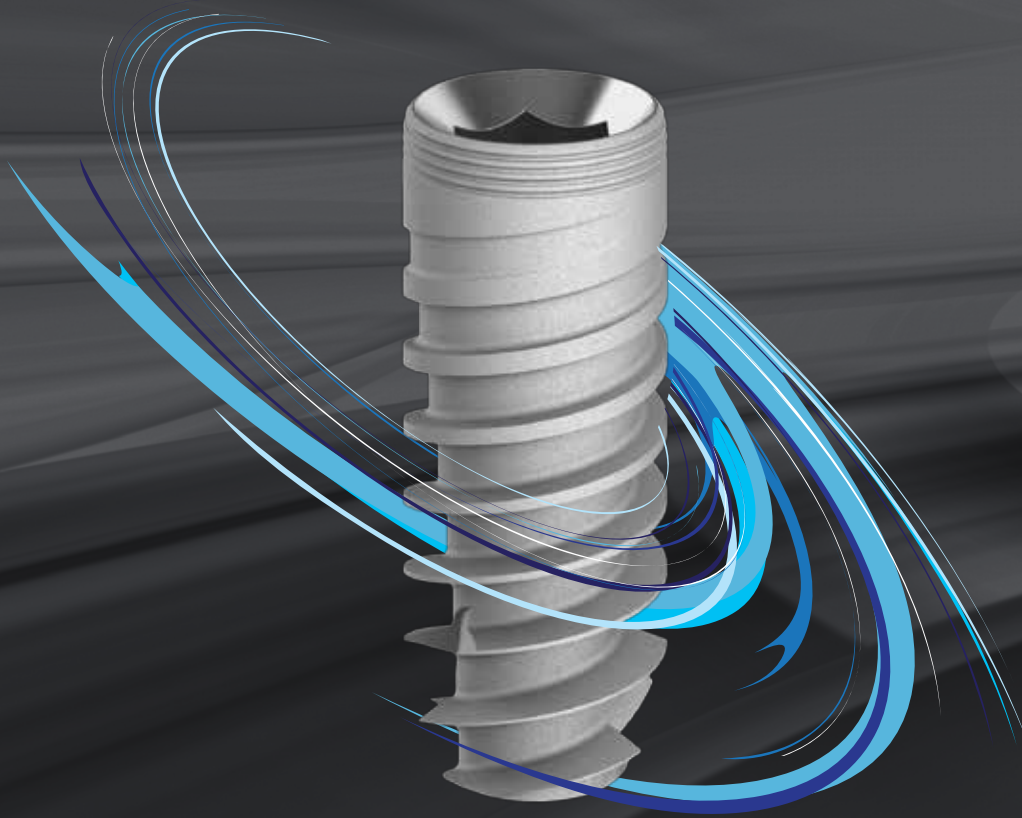
X-ray After Placement





Cyclone®

Limited bone loss
Primary stability
Immediate loading



A tapered implant for all cases



Self-tapping implant



Minimal bone loss

The Cyclone® Implant

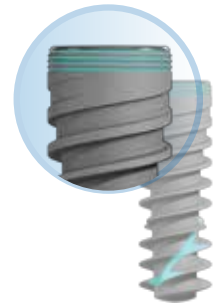
The Cyclone implant is an aggressive tapered implant with great applications.

Designed for all different applications the Cyclone is at its best in soft bone, the aggressive design helps the Cyclone achieve great primary stability where other might fail.



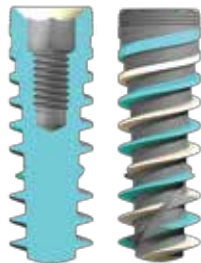
Coronal Part

The Coronal part has a rough surface with 3 micro rings that reduce bone resorption and crestal stress, this helps with improving load distribution.



Implant Threads

The Cyclone's implant threads are double-threaded (2X2.4mm). The threads on the coronal part are the thickest and are in a shape of a trapezoid, the middle threads are slightly narrower, and the threads at the apical part are V shaped for fast insertion, bone condensing and self-tapping.



Implant Body

The implant body is based on a tapered body while the envelope is a cylindrical design, this helps achieve superior osseointegration, initial stability and easy insertion.



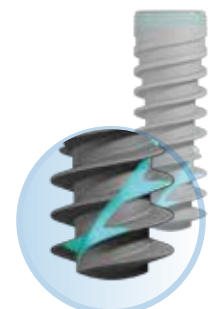
Internal Hex

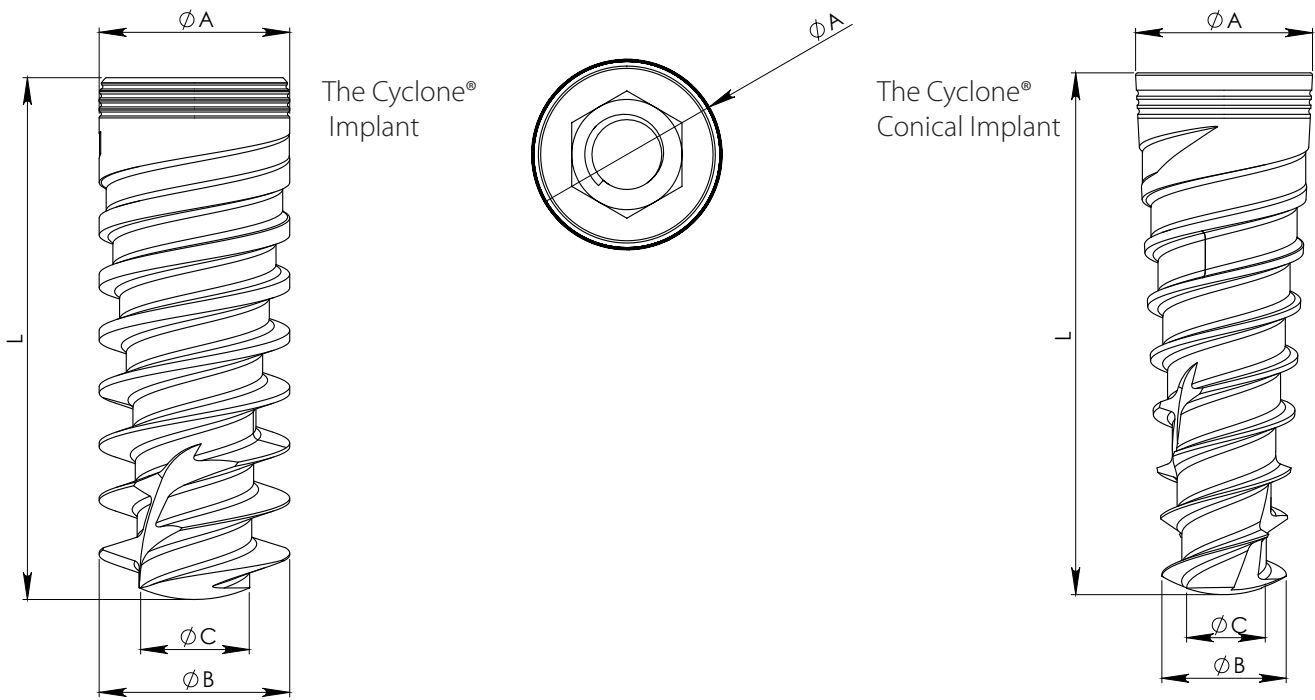
The Internal hex connection is extremely precise to enable perfect implant-abutment connection and simple restoration process.




Apical Part

The starting threads in the apical part are deep and sharp, enabling self drilling and easy penetration that prevents damage to the anatomical structure.








The Cyclone® Conical Implant


	Ref No.	L	A	B	C	
 Ø 3.75	BH-S308	8	3.75	2.7	1.7	□
	BH-S310	10	3.75	2.7	1.7	■
	BH-S311	11.5	3.75	2.7	1.7	■
	BH-S313	13	3.75	2.7	1.7	■
	BH-S316	16	3.75	2.7	1.7	■

The Cyclone® Implant

	Ref No.	L	A	B	C	
 Ø 3.75	BH-D308	8	3.75	3.75	2.05	□
	BH-D310	10	3.75	3.75	2.05	■
	BH-D311	11.5	3.75	3.75	2.05	■
	BH-D313	13	3.75	3.75	2.05	■
	BH-D316	16	3.75	3.75	2.05	■

	Ref No.	L	A	B	C	
 Ø 4.2	BH-D408	8	4.2	4.2	2.44	□
	BH-D410	10	4.2	4.2	2.44	■
	BH-D411	11.5	4.2	4.2	2.44	■
	BH-D413	13	4.2	4.2	2.44	■
	BH-D416	16	4.2	4.2	2.44	■

	Ref No.	L	A	B	C	
 Ø 5.0	BH-D508	8	5.0	5.0	3.2	□
	BH-D510	10	5.0	5.0	3.2	■
	BH-D511	11.5	5.0	5.0	3.2	■
	BH-D513	13	5.0	5.0	3.2	■
	BH-D516	16	5.0	5.0	3.2	■

	Ref No.	L	A	B	C	
 Ø 6.0	BH-D608	8	6.0	6.0	4.3	□
	BH-D610	10	6.0	6.0	4.3	■
	BH-D611	11.5	6.0	6.0	4.3	■
	BH-D613	13	6.0	6.0	4.3	■
	BH-D616	16	6.0	6.0	4.3	■



● Cyclone®



● SIXt®



● Shark

*Bhi Implants!
My right choice*









Healing Caps









Healing Caps

Aesthetic Healing Caps

						
Ref.	BH-HCE2	BH-HCE3	BH-HCE4	BH-HCE5	BH-HCE6	BH-HCE7
D	4.7mm	4.7mm	4.7mm	4.7mm	4.7mm	4.7mm
L	2.0mm	3.0mm	4.0mm	5.0mm	6.0mm	7.0mm

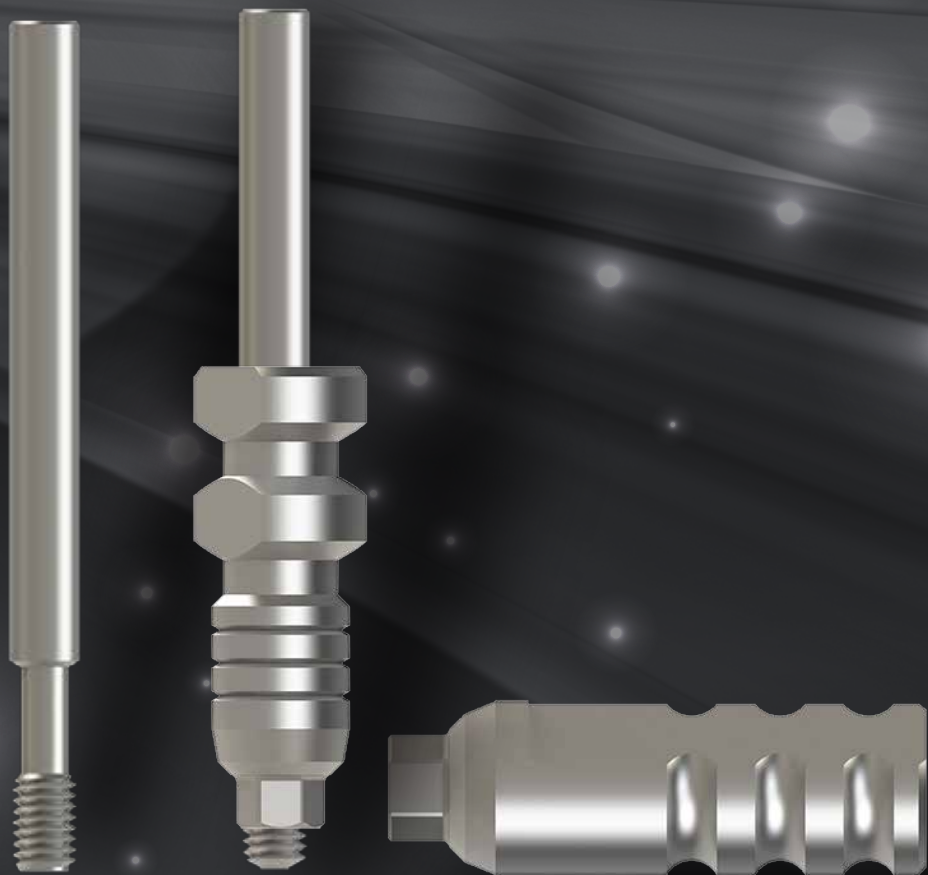
Narrow Platform Healing Caps

						
Ref.	BH-HCS2	BH-HCS3	BH-HCS4	BH-HCS5	BH-HCS6	BH-HCS7
D	3.88mm	3.88mm	3.88mm	3.88mm	3.88mm	3.88mm
L	2.0mm	3.0mm	4.0mm	5.0mm	6.0mm	7.0mm





Impression



Impression Transfer



Name	Open Tray Transfer Long
Ref. No.	BH-OTTL Ø 4.2



Name	Open Tray Transfer Short
Ref. No.	BH-OTTS Ø 4.2



Name	Closed Tray Transfer Long
Ref. No.	BH-CTTL Ø 4.5



Name	Closed Tray Transfer Short
Ref. No.	BH-CTTS Ø 4.5



Name	Slim Closed Tray Transfer Long
Ref. No.	BH-CTTLS Ø 3.85



Name	Screw for Open Tray
Ref. No.	BH-STT2



Name	Screw for Open/Close Tray
Ref. No.	BH-STT1

Implant Analog



Name	Implant Analog
Ref. No.	BH-1220



Name	Wide Platform 5.0 Implant Analog
Ref. No.	BH-112W



Prosthetic Abutments

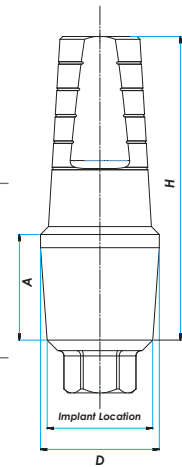


Prosthetic Abutments



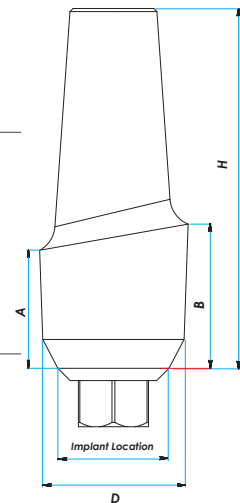
Ref.	BH-SAR1	BH-SAR2	BH-SAR3	BH-SAR4
H	8.50mm	9.50mm	10.5mm	11.5mm
D	4.50mm	4.50mm	4.50mm	4.50mm
A	1.00mm	2.00mm	3.00mm	4.00mm

Straight-Titanium
Abutments
Shoulder



Ref.	BH-AA01	BH-AA02	BH-AA03	BH-AA04
H	8.5mm	9.5mm	10.5mm	11.5mm
D	4.90mm	4.90mm	4.90mm	4.90mm
A	0.00mm	1.00mm	2.00mm	3.00mm
B	1.00mm	2.00mm	3.00mm	4.00mm

Anatomic
Abutments



All Abutments
include **abutment screw**

Abutment
Screw

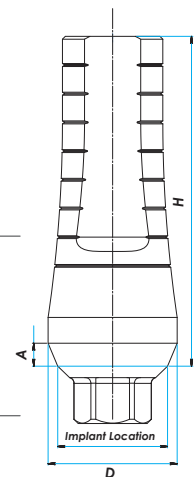


Ref.	BH-PS06
------	---------



Ref.	BH-SA06	BH-SA12
H	8.50mm	11.5mm
D	4.50mm	4.50mm
A	0.80mm	0.80mm

Standard
Abutments

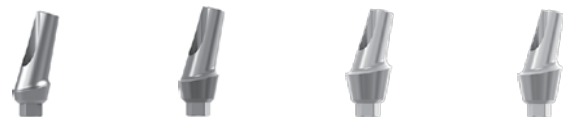
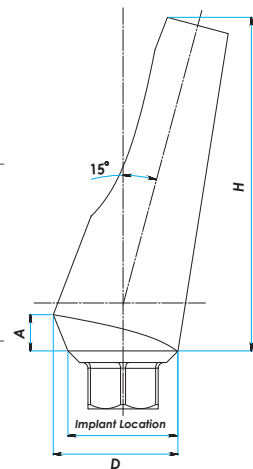


Prosthetic Abutments



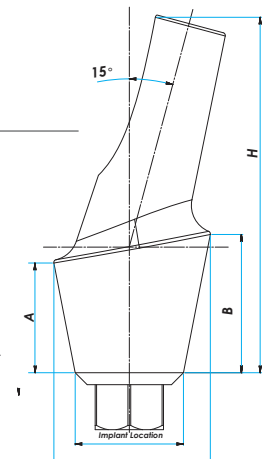
Ref.	BH-1507	BH-1509	BH-1512
H	7.50mm	9.50mm	11.5mm
D	4.66mm	4.66mm	4.66mm
A	1.30mm	1.30mm	1.30mm

15° Angular Abutments



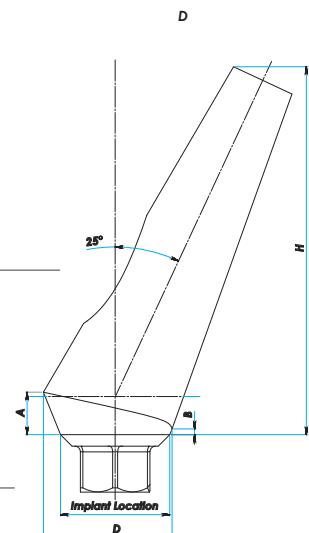
Ref.	BH-1501A	BH-1502A	BH-1503A	BH-1504A
H	9.50mm	10.5mm	11.5mm	12.5mm
D	5.10mm	5.10mm	5.10mm	5.10mm
A	1.00mm	2.00mm	3.00mm	4.00mm
B	2.00mm	3.00mm	4.00mm	5.00mm

15° Angular Anatomic Abutments




Ref.	BH-2506	BH-2509	BH-2512
H	7.00mm	9.50mm	11.5mm
D	4.66mm	4.66mm	4.66mm
A	1.3mm	1.3mm	1.3mm
B	0.30mm	0.30mm	0.30mm

25° Angular Abutments Shoulder

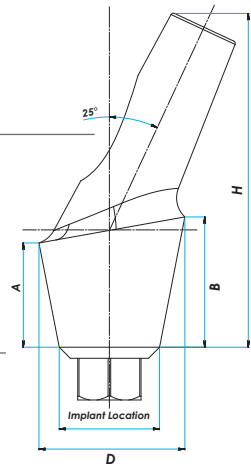


Prosthetic Abutments



Ref.	BH-2501A	BH-2502A	BH-2503A	BH-2504A
H	9.50mm	10.5mm	11.5mm	12.5mm
D	5.20mm	5.20mm	5.20mm	5.20mm
A	1.20mm	2.20mm	3.20mm	4.20mm
B	2.00mm	3.00mm	4.00mm	5.00mm

25° Angular
Anatomic
Shoulder
Abutments



All Abutments include abutment screw

Plastic Casting



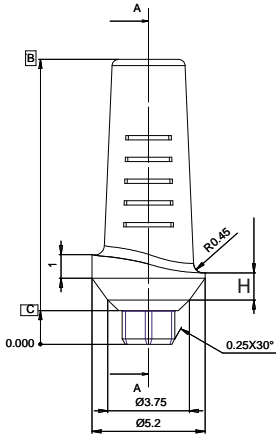
Ref.	BH-PA01	BH-PA02
H	8.5mm	8.5mm
D	3.85mm	4.5mm

Standard Abutments Slim



Ref.	BH-SAS1	Ref.	BH-SAS2	Ref.	BH-SAS3
L	5.0mm	L	8.0mm	L	10.5mm
H	3.0mm	H	6.0mm	H	8.5mm
Ø	3.85mm	Ø	3.85mm	Ø	3.85mm

Temporary PEEK Abutments



Temporary Straight Peek Abutment H1

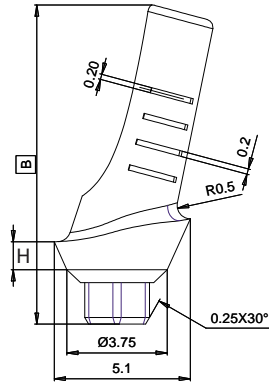
Ref.	BH-PABT-H1
H	1.0mm
B	13mm

Temporary Straight Peek Abutment H2

Ref.	BH-PABT-H2
H	2.0mm
B	14mm

Temporary Straight Peek Abutment H3

Ref.	BH-PABT-H3
H	3.0mm
B	15mm



Temporary Angulated 15° Peek Abutment H1

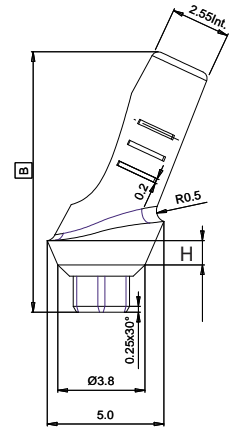
Ref.	BH-PABT15-H1
H	1.0mm
B	12mm

Temporary Angulated 15° Peek Abutment H2

Ref.	BH-PABT15-H2
H	2.0mm
B	13mm

Temporary Angulated 15° Peek Abutment H3

Ref.	BH-PABT15-H3
H	3.0mm
B	14mm



Temporary Angulated 25° Peek Abutment H1

Ref.	BH-PABT25-H1
H	1.0mm
B	11mm

Temporary Angulated 25° Peek Abutment H2

Ref.	BH-PABT25-H2
H	2.0mm
B	12mm

Temporary Angulated 25° Peek Abutment H3

Ref.	BH-PABT25-H3
H	3.0mm
B	13mm

Temporary Titanium Abutments

Temporary Abutment indicated for temporary restorations-HEX



Engaging

Ref.	BH-SAT1
L	12.0mm
Ø D	4.5mm
Ø Top	3.0mm

Temporary Abutment indicated for temporary restorations-ON HEX



Non-engaging

Ref.	BH-SAT2
L	10.0mm
Ø D	4.5mm
Ø Top	3.0mm



With Bigger
Implant Surface
and Better Price
you will pay less
for more









Overdenture





Overdenture

Straight Ball Attachments

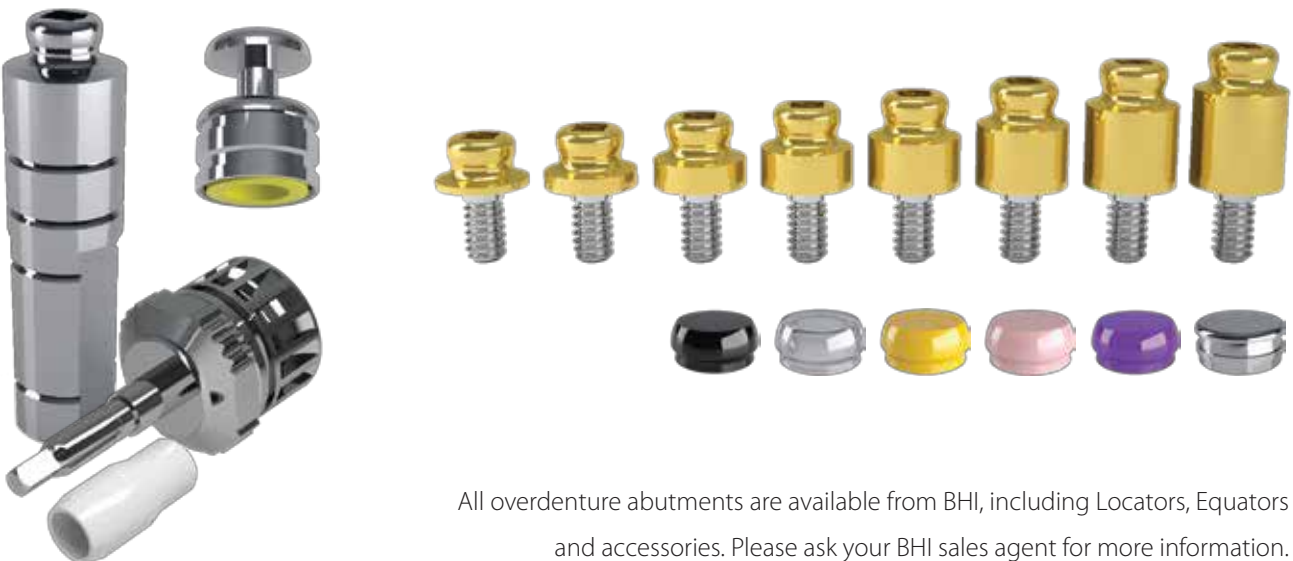
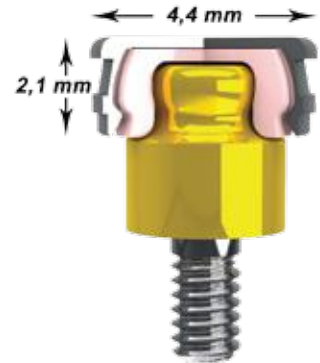
						
Ref.	BH-1001	BH-1002	BH-1003	BH-1004	BH-1005	BH-1006
H	1.0mm	2.0mm	3.0mm	4.0mm	5.0mm	6.0mm
L	8.9mm	9.9mm	10.9mm	11.9mm	12.9mm	13.0mm

Silicon Caps & Metal House

						
Ref.	BH-BC00	BH-CFB01	041CAN	040CRN	040CRNSN	040TCN

insertion tool for caps normal and micro sizes

Ref.	0851AC
------	--------



All overdenture abutments are available from BHI, including Locators, Equators and accessories. Please ask your BHI sales agent for more information.

Surgical Kit

Bhi offers flexible implant surgical kit containing our surgical tools that save time and space in dental clinics.

Due to the modular case design, any component combination can be made to meet specific surgical needs. The modular surgical case slot system design guarantees an easy-to-find, easy-to-pull process facilitating the implant surgery procedure.

Packing List

Ref.	Product Description	Qty
BH-PKI1	Surgical kit Plastic Box	1
BH-MDL 1.9	Marking Drill	1
PD200L16	Drill with External Irrigation 2.0	1
TD280L16	Drill with External Irrigation 2.8	1
TD320L16	Drill with External Irrigation 3.2	1
TD365L16	Drill with External Irrigation 3.65	1
TD380L16	Drill with External Irrigation 3.8	1
TD410L16	Drill with External Irrigation 4.1	1
TD480L16	Drill with External Irrigation 4.8	1
TD500L16	Drill with External Irrigation 5.0	1
TD520L16	Drill with External Irrigation 5.2	1
TD550L16	Drill with External Irrigation 5.8	1
TD580L16	Drill with External Irrigation 5.6	1
CD 3.75X4.20	Countersink Drill 3.75X4.20	1
CD 5.0X6.0	Countersink Drill 5.0X6.0	1
BH-DE10	Drill Extender L - 16	1
BH-HD2S	2.42 mm Short Hex Drive L - 15	1
BH-HD2L	2.42 mm Long Hex Drive L - 27.5	1
BH-1MKS	1.25 mm Short Motor Key	1
BH-1MKL	1.25 mm Long Motor Key	1
BH-MK2S	2.42 mm Short Motor Key Adapter L - 18	1
BH-MK2L	2.42 mm Long Motor Key Adapter L - 25	1
BH-HD1S	1.25 mm Short Hex Drive L - 10	1
BH-HD1L	1.25 mm Long Hex Drive L - 15	1
BH-HD2H	1.25 mm Hand Hex Drive Long L - 12	1
BH-2001	Parallel Pin Short	1
BH-2000	Parallel Pin L - 16	1
BH-2300	Ratchet Torque	1
BH-2100	Implant Site & Gingival Measuring Tool	1



Surgical kit standard collection

Ref. BH-PKI1 Colletion

Features & Benefits

- Modular implant surgical case design
- Facilitates surgery procedure
- Easy-to-find, easy-to-pull solution
- Improves dental clinic operation efficiency

The surgical case is provided with basic implant surgical tools and accessories for any implantation procedure.

Surgical Drills

Recommended drilling sequence for Bhi implants.
 The drills made of stainless steel are to be used with all Bhi implants. All drills are color coded with laser marks that facilitate the follow of the drilling sequence.

Drills External Irrigation Stainless steel



Ref No.	PD200L16	TD280L16	TD320L16	TD365L16	TD380L16
Name	Twist Drill	Twist Drill	Twist Drill	Twist Drill	Twist Drill
Diameter	2.0	2.8	3.2	3.65	3.8
Color Code	□	■	■	■	■

Drills External Irrigation Stainless steel



Ref No.	TD410L16	TD480L16	TD500L16	TD520L16	TD550L16	TD580L16
Name	Twist Drill	Twist Drill	Twist Drill	Twist Drill	Twist Drill	Twist Drill
Diameter	4.1	4.8	5.0	5.2	5.5	5.8
Color Code	■	■	■	■	■	■

Other Drills Stainless steel



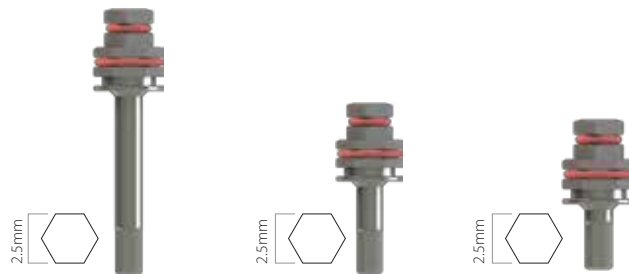
Ref No.	BH-DE10	MDL 1.90	CD 3.75x4.20	CD 5.0x6.0
Name	Drill Extender	Marking Drill	Countersink	Countersink



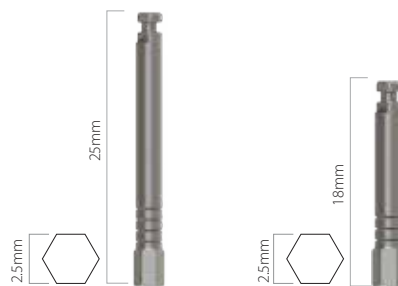
Implant & Prosthetic Drivers



Implant Drivers

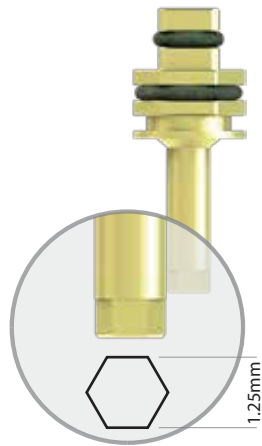


Ref. No.	BH-HD2L	BH-HD2M	BH-HD2S
Name	Long Hex Driver	Midium Hex Driver	Short Hex Driver
⬡	2.5mm	2.5mm	2.5mm
Length	27.5mm	18.5mm	15.0mm

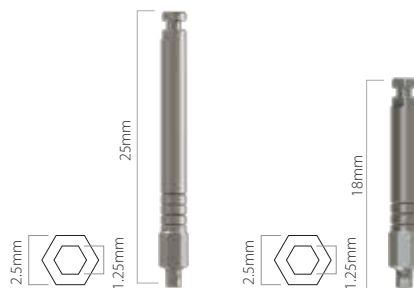


Ref. No.	BH-MK2L	BH-MK2S
Name	Motor Mount	Short Motor Mount
⬡	2.5mm	2.5mm
Length	25.0mm	20.0mm

Prosthetic Drivers



Ref. No.	BH-HD1S	BH-HD1L	BH-HD2H	BH-HD1H	BH-CODR
Name	Short Hex Drive	Long Hex Drive	Hand Hex Drive	Short Hand Hex Drive	Contra Angle
Hex	1.25mm	1.25mm	1.25mm	1.25mm	1.25mm
Length	20.0mm	24.0mm	12.0mm	8.500	20.0mm



Ref. No.	BH-1MKL	BH-1MKS
Name	Motor Mount	Short Motor Mount
Hex	2.5x1.25mm	2.5x1.25mm
Length	25mm	20mm

Surgical Accessories



Ref. No.	BH-SSD1
Name	Screwdriver



Ref. No.	BH-2300
Name	Torque/Ratchet 10-45 Ncm



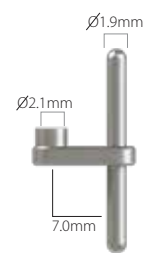
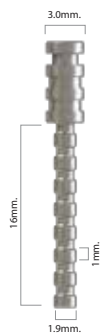
Ref. No.	BH-2200
Name	Ratchet Wrench

Implant Sit & Gingival Depth Mesure

Ref. No.	BH-2100
----------	---------



Parallel and Depth Guides



Ref. No.	BH-2000	BH-2001	BH-2010
Name	Parallel Pin Long	Parallel Pin Short	Parallel Guide
Length	16	10	22



Standard & Quality Certificates



Bhi Standards

The BHI Implants manufacturing facility operates in conformity with the ISO 13485:2012 certificate.

BHI has passed inspections from the European Notified Body (CE 0483) on numerous occasions for the approval of implant design, manufacturing and quality assurance systems, and holds a CE Mark for Europe.

CE
0483

BHI products
are cleared for
marketing
in the USA



THE STANDARDS INSTITUTION OF ISRAEL



IONet



MGMT. SYS.
RvA C 096



The Standards Institution of Israel

CERTIFICATE

This is to certify that the Quality Management System of

BHI IMPLANTS LTD.

2 Ha'amal Str., Afula, Israel

Has been audited and registered by SI-QCD as conforming to the requirements of

ISO 13485:2003

This Certificate is Applicable to

Design, development, manufacturing & distribution of dental implants, prosthetics and accessories.

Certificate No.:	67838	Certificate Issue Date:	01/11/2015
Initial Certification Date:	30/10/2012	Certification Expiry Date:	31/10/2018

SI-QCD assumes no liability to any party other than the client, and then only in accordance with the agreed upon Certification Agreement. This certificate's validity is subject to the organization maintaining their system in accordance with SI-QCD requirements for system certification. The continued validity may be verified via scanning the code with a smartphone, or via website www.sii.org.il. This certificate remains the property of SI-QCD.



Eli Stein
Director General





Eli Cohen-Kagan
Director, Quality & Certification Division

Page 1 of 1

Our Vision: To Enhance Both Global Competitiveness of our Services, with our Uncompromised Quality and Integrity

Certificate

mdc medical device certification GmbH
certifies that

BHI implants Ltd.
2 Hamal Street, POB 1063
Industrial Park Afula, 18110
Israel

for the scope

**design, development, manufacturing and distribution of
dental implants, prosthetics and accessories**

has introduced and applies a

Quality Management System

The mdc audit has proven that this quality management system
meets all requirements of the following standard

EN ISO 13485

**Medical devices – Quality management systems –
Requirements for regulatory purposes**

EN ISO 13485:2012 + AC:2012 - ISO 13485:2003 + Cor. 1:2009

Valid from	2013-10-24
Valid until	2017-10-19
Registration no.	D1350900004
Report no.	E-D13509_2013-10-24
Stuttgart	2013-10-24


Head of Certification Body



mdc medical device certification GmbH
Kriegerstraße 6
D-70191 Stuttgart, Germany
Phone: +49-(0)711-253597-0
Fax: +49-(0)711-253597-10
Internet: <http://www.mdc-ce.de>



EC Certificate

mdc medical device certification GmbH

Notified Body 0483
herewith certifies that

BHI implants Ltd.
2 Hamal Street, POB 1063
1857107 Industrial Park Afula
Israel

for the scope

dental implants with cover screw and healing cap,
prosthetics (abutments), dental instruments
(see attachment)

has introduced and applies a

Quality System

for the design, manufacture and final inspection.

The mdc audit has proven that this quality system
meets all requirements according to

Annex II – excluding Section 4
of the Council Directive 93/42/EEC

of 14 June 1993 concerning medical devices.

The surveillance will be held as specified in Annex II, Section 5.

Valid from	2016-04-14
Valid until	2017-10-19
Registration no.	D1350900007
Report no.	P16-00156-65940
Stuttgart	2016-04-14



Head of Certification Body



mdc medical device certification GmbH
Kriegerstraße 6
D-70191 Stuttgart, Germany
Phone: +49-(0)711-253597-0
Fax: +49-(0)711-253597-10
Internet: <http://www.mdc-ce.de>





Certificate

The Certification Body

**MEDCERT Zertifizierungs- und Prüfungsgesellschaft für die Medizin GmbH
Pilatuspool 2 – 20355 Hamburg – Germany**

herewith confirms that the company

**MedNet GmbH
Borkstraße 10 – 48163 Münster
Germany**

has introduced and applies a Quality Management System in the area of

**European Authorized Representation for manufacturers of
medical devices and in-vitro diagnostics**

A Quality Audit demonstrated compliance of the Quality Management System with

EN ISO 13485:2012 + AC:2012

The certification assumes that the company is applying and maintaining its
Quality Management System according to the above given standard.
The license of certification is subject to surveillance by MEDCERT.

This certificate is valid until: 08 October 2019

Hamburg, 10 October 2014

Process No.: QS – 2896

Certificate No.: 2896GB438141010A

A blue handwritten signature, appearing to be "Markus Bianchi", written over a horizontal line.

MEDCERT Certification Body
(Markus Bianchi)



Akkreditiert durch
Zentralstelle der Länder
für Gesundheitsschutz
bei Arzneimitteln
und Medizinprodukten
ZLG-ZQ-983.99.02-46



Bhi Implants Quality Policy

BHI management is applying a Quality Management System according to EN ISO 13485 Standard. As such we have acquired the commitment of assigning both the necessary human resources and technical resources for the development and progress of our activity, developing and producing dental implant devices, abutments and their accessories.

Our Quality Policy is focused on the optimal service level to our customers, which includes:

- **Patient Safety**
 - **Regulatory Compliance**
 - **Customer Satisfaction**
 - **Product Performances and Effectiveness**
 - **Maintain an Effective Quality System**
 - **Always Improving**
- It is the policy of BHI Implants to provide high quality products and services that consistently meet the needs and expectations of our customers and the regulatory requirements of the medical devices' industry.
 - Our objective is to demonstrate top level of both technology and quality, utilizing state-of-the-art methods. In order to implement our quality policy and fulfill our goals, BHI Implants management is committed to:
 - Fulfill or exceed Customer needs and expectations by delivering a quality product in a consistent and timely manner.
 - Encourage and maintain the commitment for improvement and communicate our goals and objectives to employees in all organization layers. Promote a working environment where training and tools are provided for all employees and their roles in order to proceed in a safe and efficient manner.
 - Encourage employees' comprehension and involvement in BHI's quality goals and quality policy.
 - Put the necessary resources of training employees in all organization layers, assuring high skills and competence of the human resource.
 - Provide a system of policies which are periodically reviewed to ensure the ability of all personnel to perform their work adequately, effectively and with high level of responsibility and awareness to implications of irregularities.
 - Maintain the safety and effectiveness of BHI Implants products, services and quality in order to enhance effectiveness, improvement and customer satisfaction.
 - Discover ways to expand BHI Implants technology into different fields or applications.
- To achieve all these purposes, we count on all our staff efforts and cooperation.



Packages & Labels

Packages & Labels



The Shark Pkg.

- With a "Shark tooth" design, this implant is a "Cut" above the rest.
- The Thread design optimizes the bone's quality
- Best for immediate Placing



1. Cover Screw
2. Shark Implant
3. Carrier
4. Implant tube
5. Packaging tube



The SIXt® Pkg.

- The only 6 threaded implant
- Bigger surface for better osseointegration
- Achieve Early Restoration



1. Cover Screw
2. SIXt® Implant
3. Carrier
4. Implant tube
5. Packaging tube



The Cyclone® Pkg.

- A tapered implant for all cases
- Self-tapping implant
- Minimal bone loss



1. Cover Screw
2. Cyclone® Implant
3. Carrier
4. Implant tube
5. Packaging tube



Packages & Labels

Implant package - User guide

1



Remove tape from the top of the pkg.

2



Take out the inner pkg.

3



Remove implant tube from the drawer

4



Take off the silicon cover

5



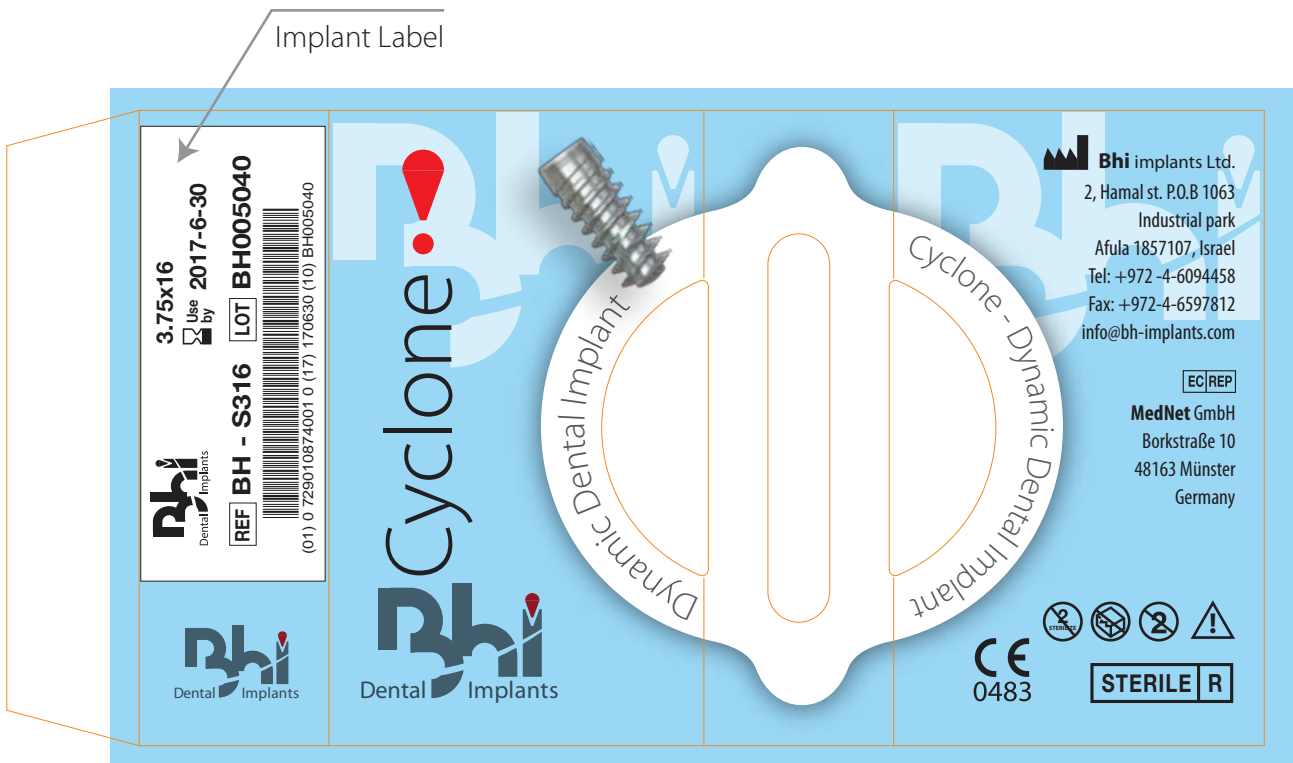
Pull out the implant inner tube

6



Connect the Ratchet to the implant carrier

Implant Package



Manufacturer



Authorized representative in the European Community



General Warning Sign, consult accompanying documents



Single use



Do Not Use if Package is Damaged



Sterilize single use



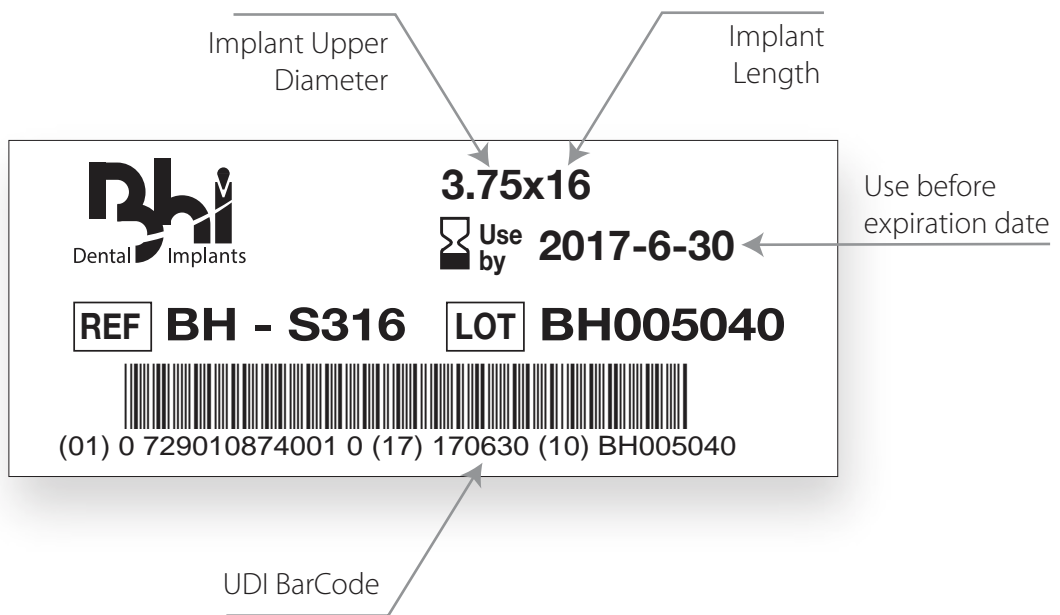
CE Mark Devices



Sterilized implant by gamma irradiation




Implant Label




REF Reference / Catalogue Number


LOT Lot / Batch Number

 Use before expiration date

Prosthetic & Accessories label





REF **BH - 1509** **LOT** **D41170110A**



(01) 0 7280109 74052 1 (10) BH005234

UDI BarCode










EC REP
MedNet GmbH
Borkstraße 10
48163 Münster
Germany

BHI Implants Ltd - 2, Hamal st., P.o.b. 1063, Industrial park
Afula 1857107 Israel T: +972 -4-6094458, F: +972-4-6597812
info@bh-implants.com | www.bh-implants.com

15° Angular Anatomic Abutment **15° Angular Anatomic Abutment**

REF BH-1509	REF BH-1509
LOT D41170110A	LOT D41170110A
L 9.5mm	L 9.5mm

Product name



Manufacturer



Authorized representative in the European Community



General Warning Sign, consult accompanying documents



Single use



Catalogue Number



Non Sterile



Batch Code



CE Mark Devices



Product length



*** Warranty ***

This guarantee from BHI Implants applies to the BHI Implants dental products in favor of the attending physician/dentist only (the "User").

Third parties, particularly patients or intermediate suppliers, may not derive any rights from this BHI Implants Guarantee. The BHI Implants Guarantee covers only the replacement of BHI Implants Products and not any associated costs of the User or the patient (including the cost of the dental treatment for the performance of such replacement).

BHI Implants Products Covered by the BHI Implants Guarantee



BHI Implants Product Warranty

Implants

Lifetime guarantee period: free of charge replacement of implant with equivalent implant for implant that fails to properly remain in the bone (the only possible change may be related to its diameter and/or length).

Abutment attached to an implant

10 year guarantee period: free of charge Replacement of any non-temporary and non-provisional abutment with equivalent abutment for abutment that had a mechanical failure (Excluding normal wear to overdenture attachments).

“Free of charge” – including the costs of shipment.

Guarantee conditions

BHI Implants hereby guarantees that, if any BHI Implants Product is defective as a result of a failure of the material strength and/ or stability of the BHI Implants Product during the guarantee periods set out in Section 2, BHI Implants will replace the BHI Implants Product with the same or substantially equivalent product, all as set out in Section 2 above. The guarantee periods shall commence at the time of treatment with a BHI Implants Product by the User; provided however that the following guarantee conditions are individually and collectively met and documented.

BHI Implants Products have been used exclusively and not in combination with any other manufacturer's products;
Compliance with and application of BHI Implants' instructions (including but not limited to, the instructions for use) valid at the time of treatment as well as recognized dental procedures, during and after the treatment; Good oral hygiene of the patient as monitored by the User; No guarantee case resulting from an accident, a trauma or any other damage caused by the patient or a third party;

The Product wasn't specially modified at the request of the User or by the User, and wasn't manufactured individually for the User.

Filing of a completed and signed claim form not later than three months after a guarantee case arises; Return to BHI Implants of the BHI Implants Products in sterilized condition, disinfected if appropriate or as indicated in the instructions for use; BHI Implants Guarantee 1/2 >> Advanced Dental Solutions Ltd.

Limits and limitations

This BHI Implants Guarantee is the only guarantee provided by BHI Implants. It does not derogate from the warranty rights, if any, conferred under the sales agreement between the User and its supplier.

The User remains free to claim rights from its supplier.

BHI Implants hereby disclaims any other warranties, express or implied and bhi implants hereby excludes any liability for lost earnings and direct or indirect damages as well as collateral and consequential damages, directly or indirectly related to bhi implants products, services or information.

In case one of the Products that is to be replaced under the BHI Implants Guarantee is no longer commercially available, an alternative solution shall be offered by BHI Implants, which shall be the exclusive remedy in such case.

Guarantee territory

This BHI Implants Guarantee applies worldwide to BHI Implants Products if purchased from BHI Implants and/or any of its affiliated companies or from an official BHI Implants distributor.

Modification or termination

BHI Implants may modify or terminate this BHI Implants Guarantee at any time in whole or in part, for any reason whatsoever. Changes to or the termination of the BHI Implants Guarantee will not affect the guarantee given under this BHI Implants Guarantee for BHI Implants Products installed prior to the date of the change or termination.



Premium Quality
Technologies

Index

BHI Catalog 2017 - Product list and Ref. no

Product Category	Product Description	Page
Shark dental implant	Shark dental implant 3.75 mm Dia length 8 mm	9
Shark dental implant	Shark dental implant 3.75 mm Dia length 10 mm	9
Shark dental implant	Shark dental implant 3.75 mm Dia length 11 mm	9
Shark dental implant	Shark dental implant 3.75 mm Dia length 13 mm	9
Shark dental implant	Shark dental implant 3.75 mm Dia length 16 mm	9
Shark dental implant	Shark dental implant 4.2mm Dia length 8 mm	9
Shark dental implant	Shark dental implant 4.2mm Dia length 10 mm	9
Shark dental implant	Shark dental implant 4.2mm Dia length 11 mm	9
Shark dental implant	Shark dental implant 4.2mm Dia length 13 mm	9
Shark dental implant	Shark dental implant 4.2mm Dia length 16 mm	9
Shark dental implant	Shark dental implant 5.0 mm Dia length 8 mm	9
Shark dental implant	Shark dental implant 5.0 mm Dia length 10 mm	9
Shark dental implant	Shark dental implant 5.0 mm Dia length 11 mm	9
Shark dental implant	Shark dental implant 5.0 mm Dia length 13 mm	9
Shark dental implant	Shark dental implant 5.0 mm Dia length 16 mm	9
Shark dental implant	Shark dental implant 6.0 mm Dia length 8 mm	9
Shark dental implant	Shark dental implant 6.0 mm Dia length 10 mm	9
Shark dental implant	Shark dental implant 6.0 mm Dia length 11 mm	9
Shark dental implant	Shark dental implant 6.0 mm Dia length 13 mm	9
Shark dental implant	Shark dental implant 6.0 mm Dia length 16 mm	9
SIXt dental implant	SIXt dental implant 3.75 mm Dia length 8 mm	13
SIXt dental implant	SIXt dental implant 3.75 mm Dia length 10 mm	13
SIXt dental implant	SIXt dental implant 3.75 mm Dia length 11 mm	13

Index

BHI Catalog 2017 - Product list and Ref. no

Product Category	Product Description	Page
SIXt dental implant	SIXt dental implant 3.75 mm Dia length 13 mm	13
SIXt dental implant	SIXt dental implant 3.75 mm Dia length 16 mm	13
SIXt dental implant	SIXt dental implant 4.2mm Dia length 8 mm	13
SIXt dental implant	SIXt dental implant 4.2mm Dia length 10 mm	13
SIXt dental implant	SIXt dental implant 4.2mm Dia length 11 mm	13
SIXt dental implant	SIXt dental implant 4.2mm Dia length 13 mm	13
SIXt dental implant	SIXt dental implant 4.2mm Dia length 16 mm	13
SIXt dental implant	SIXt dental implant 5.0 mm Dia length 8 mm	13
SIXt dental implant	SIXt dental implant 5.0 mm Dia length 10 mm	13
SIXt dental implant	SIXt dental implant 5.0 mm Dia length 11 mm	13
SIXt dental implant	SIXt dental implant 5.0 mm Dia length 13 mm	13
SIXt dental implant	SIXt dental implant 5.0 mm Dia length 16 mm	13
SIXt dental implant	SIXt dental implant 6.0 mm Dia length 8 mm	13
SIXt dental implant	SIXt dental implant 6.0 mm Dia length 10 mm	13
SIXt dental implant	SIXt dental implant 6.0 mm Dia length 11 mm	13
SIXt dental implant	SIXt dental implant 6.0 mm Dia length 13 mm	13
SIXt dental implant	SIXt dental implant 6.0 mm Dia length 16 mm	13
Cyclone Conical Implant	Cyclone Conical Implant 3.75 m Dia length 8 mm	17
Cyclone Conical Implant	Cyclone Conical Implant 3.75 m Dia length 10 mm	17
Cyclone Conical Implant	Cyclone Conical Implant 3.75 m Dia length 11.5 m	17
Cyclone Conical Implant	Cyclone Conical Implant 3.75 mm Dia length 13 mm	17
Cyclone Conical Implant	Cyclone Conical Implant 3.75 mm Dia length 16 mm	17
Cyclone dental implant	Cyclone dental implant 3.75 mm Dia length 8 mm	17
Cyclone dental implant	Cyclone dental implant 3.75 mm Dia length 10 mm	17
Cyclone dental implant	Cyclone dental implant 3.75 mm Dia length 11.5	17

Index

BHI Catalog 2017 - Product list and Ref. no

Product Category	Product Description	Page
Cyclone dental implant	Cyclone dental implant 3.75mm Dia length 13 mm	17
Cyclone dental implant	Cyclone dental implant 3.75mm Dia length 16 mm	17
Cyclone dental implant	Cyclone dental implant 4.2mm Dia length 8 mm	17
Cyclone dental implant	Cyclone dental implant 4.2mm Dia length 10 mm	17
Cyclone dental implant	Cyclone dental implant 4.2mm Dia length 11.5 mm	17
Cyclone dental implant	Cyclone dental implant 4.2mm Dia length 13 mm	17
Cyclone dental implant	Cyclone dental implant 4.2mm Dia length 16 mm	17
Cyclone dental implant	Cyclone dental implant 5.0 mm Dia length 8 mm	17
Cyclone dental implant	Cyclone dental implant 5.0 mm Dia length 10 mm	17
Cyclone dental implant	Cyclone dental implant 5.0 mm Dia length 11.5 m	17
Cyclone dental implant	Cyclone dental implant 5.0 mm Dia length 13 mm	17
Cyclone dental implant	Cyclone dental implant 5.0mm Dia length 16 mm	17
Cyclone dental implant	Cyclone dental implant 6.0 mm Dia length 8 mm	17
Cyclone dental implant	Cyclone dental implant 6.0 mm Dia length 10 mm	17
Cyclone dental implant	Cyclone dental implant 6.0 mm Dia length 11.5 mm	17
Cyclone dental implant	Cyclone dental implant 6.0 mm Dia length 13 mm	17
Cyclone dental implant	Cyclone dental Implant 6.0 mm Dia length 16 mm	17
Aesthetic Healing Cap	Aesthetic Healing Cap L - 2	20
Aesthetic Healing Cap	Aesthetic Healing Cap L - 3	20
Aesthetic Healing Cap	Aesthetic Healing Cap L - 4	20
Aesthetic Healing Cap	Aesthetic Healing Cap L - 5	20
Aesthetic Healing Cap	Aesthetic Healing Cap L - 6	20
Aesthetic Healing Cap	Aesthetic Healing Cap L - 7	20
Narrow Platform Healing Cap	Narrow Platform Healing Cap L - 2	20
Narrow Platform Healing Cap	Narrow Platform Healing Cap L - 3	20

Index

BHI Catalog 2017 - Product list and Ref. no

Product Category	Product Description	Page
Narrow Platform Healing Cap	Narrow Platform Healing Cap L - 4	20
Narrow Platform Healing Cap	Narrow Platform Healing Cap L - 5	20
Narrow Platform Healing Cap	Narrow Platform Healing Cap L - 6	20
Narrow Platform Healing Cap	Narrow Platform Healing Cap L - 7	20
Impression Transfer	Long Open Tray Transfer L 14	22
Impression Transfer	Short Open Tray Transfer L 10	22
Impression Transfer	Long Close Tray Transfer L 14	22
Impression Transfer	Long Close Tray Transfer L 10.5	22
Impression Transfer	Slim closed tray transfer Long L 14	22
Screw For Impression Transfer	Long Screw For Open Tray L - 24	22
Screw For Impression Transfer	Screw For Open/Close Tray L-16	22
Implant Analog	Implant Analog L -12.5	22
Implant Analog	Wide Platform 5.0 Implant Analog	22
Prosthetic Abutment	Straight Shoulder Abutment L=10.5	24
Prosthetic Abutment	Straight Shoulder Abutment L=11.5	24
Prosthetic Abutment	Straight Shoulder Abutment L=12.5	24
Prosthetic Abutment	Straight Shoulder Abutment L=13.5	24
Prosthetic Abutment	Straight Anatomic Shoulder Abutment L - 10.5	24
Prosthetic Abutment	Straight Anatomic Shoulder Abutment L - 11.5	24
Prosthetic Abutment	Straight Anatomic Shoulder Abutment L - 12.5	24
Prosthetic Abutment	Straight Anatomic Shoulder Abutment L - 13.5	24
Prosthetic Abutment	Straight Standard Abutment L - 8.5	24
Prosthetic Abutment	Straight Standard Abutment L - 11.5	24
Abutment Screw	Abutment Screw L 9.5	24

Index

BHI Catalog 2017 - Product list and Ref. no

Product Category	Product Description	Page
Prosthetic Abutment	15° Angular Abutment L - 7	25
Prosthetic Abutment	15° Angular Abutment L - 9	25
Prosthetic Abutment	15° Angular Abutment L - 11	25
Prosthetic Abutment	15° Angular Anatomic Abutment L - 11.5	25
Prosthetic Abutment	15° Angular Anatomic Abutment L - 12.5	25
Prosthetic Abutment	15° Angular Anatomic Abutment L - 13.5	25
Prosthetic Abutment	15° Angular Anatomic Abutment L - 14.5	25
Prosthetic Abutment	25° Angular Abutment L - 7	25
Prosthetic Abutment	25° Angular Abutment L - 9	25
Prosthetic Abutment	25° Angular Abutment L - 11	25
Prosthetic Abutment	25° Angular Anatomic Shoulder Abutment L-11.5	26
Prosthetic Abutment	25° Angular Anatomic Shoulder Abutment L-12.5	26
Prosthetic Abutment	25° Angular Anatomic Shoulder Abutment L-13.5	26
Prosthetic Abutment	25° Angular Anatomic Shoulder Abutment L-14.5	26
Prosthetic Abutment	Plastic Casting Abutment length 10.5	26
Prosthetic Abutment	Plastic Casting Abutment length 8.5	26
Prosthetic Abutment	Slim Abutments indicated for cement retained restorations L - 3	26
Prosthetic Abutment	Slim Abutments indicated for cement retained restorations L-5	26
Prosthetic Abutment	Slim Abutments indicated for cement retained restorations L-8.5	26
Prosthetic Abutment	Temporary Straight Peek Abutment H1	27
Prosthetic Abutment	Temporary Straight Peek Abutment H2	27
Prosthetic Abutment	Temporary Straight Peek Abutment H3	27
Prosthetic Abutment	Temporary Angulated 15° Peek Abutment H1	27
Prosthetic Abutment	Temporary Angulated 15° Peek Abutment H2	27
Prosthetic Abutment	Temporary Angulated 15° Peek Abutment H3	27
Prosthetic Abutment	Temporary Angulated 25° Peek Abutment H1	27

Index

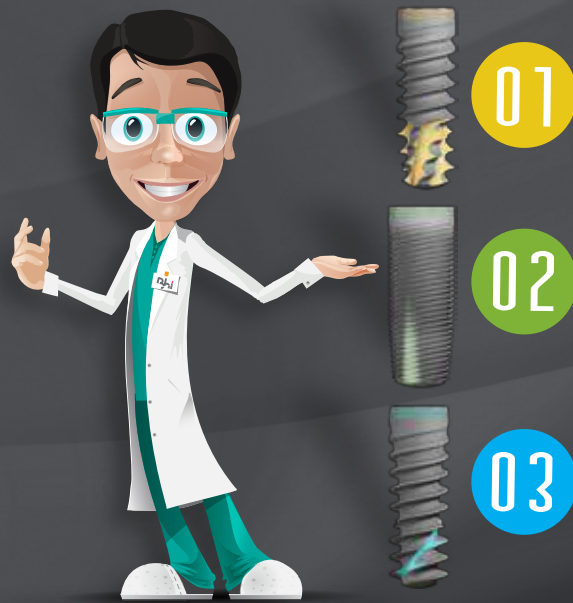
BHI Catalog 2017 - Product list and Ref. no

Product Category	Product Description	Page
Prosthetic Abutment	Temporary Angulated 25° Peek Abutment H2	27
Prosthetic Abutment	Temporary Angulated 25° Peek Abutment H3	27
Temporary Abutment	Temporary Abutment indicated for temporary restorations-HEX	27
Temporary Abutment	Temporary Abutment indicated for temporary restorations-ON HEX	27
Overdenture Straight Ball Attachment	Straight Ball Attachment L - 1	30
Overdenture Straight Ball Attachment	Straight Ball Attachment L - 2	30
Overdenture Straight Ball Attachment	Straight Ball Attachment L - 3	30
Overdenture Straight Ball Attachment	Straight Ball Attachment L - 4	30
Overdenture Straight Ball Attachment	Straight Ball Attachment L - 5	30
Overdenture Straight Ball Attachment	Straight Ball Attachment L - 6	30
Overdenture - Insertion tool for caps	Insertion tool for caps normal and micro sizes	30
Overdenture Metal Cap	Metal Cap for Ball Attachement	30
Overdenture Silicon Cap	Silicon Cap	30
Overdenture Stainless Steel Housing	Stainless Steel Housing Normal Size	30
Overdenture Clear Cap	Clear Cap Normal Size	30
Overdenture Pink Cap	Pink Cap Normal Size	30
Overdenture Pink Cap	Titan Cap Normal Size	30
Surgical Kit Standard Collection	Bhi Standard Collection of Surgical tools	31
Twist Drill	Drill with External Irrigation 2.0	32
Twist Drill	Drill with External Irrigation 2.8	32
Twist Drill	Drill with External Irrigation 3.2	32
Twist Drill	Drill with External Irrigation 3.65	32
Twist Drill	Drill with External Irrigation 3.8	32
Twist Drill	Drill with External Irrigation 4.1	32
Twist Drill	Drill with External Irrigation 4.8	32
Twist Drill	Drill with External Irrigation 5.0	32

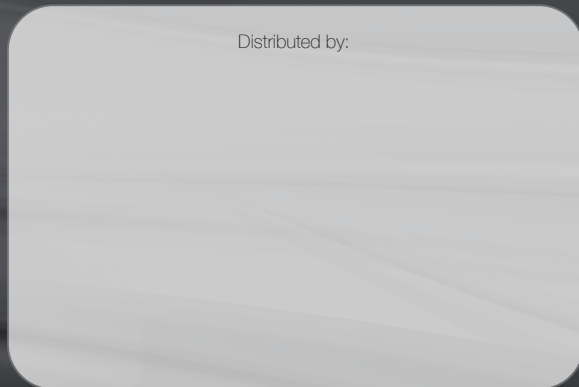
Index

BHI Catalog 2017 - Product list and Ref. no

Product Category	Product Description	Page
Twist Drill	Drill with External Irrigation 5.2	32
Twist Drill	Drill with External Irrigation 5.8	32
Twist Drill	Drill with External Irrigation 5.6	32
Drill Extender	Drill Extender	32
Marking Drill	Marking Drill	32
Countersink	Countersink Drill 3.75X4.20	32
Countersink	Countersink Drill 5.0X6.0	32
Implant Driver	2.5 mm Long Hex Drive L - 27.5	34
Implant Driver	2.5 mm Long Hex Drive L - 15	34
Implant Driver	Internal Hex Drive 2.5 mm L 18.5	34
Motor Mount	2.42 mm Long Motor Key Adapter L - 25	34
Short Motor Mount	2.42 mm Short Motor Key L-20	34
Prosthetic Driver	1.25 mm Short Hex Drive L - 20	35
Prosthetic Driver	1.25 mm Long Hex Drive L - 24	35
Hand Prosthetic Driver	1.25 mm Hand Hex Drive Long L - 12	35
Hand Prosthetic Driver	1.25 mm Hand Hex Drive Short L - 8.5	35
Contra Angle	Contra Angle 1.25 mm L 20	35
Motor Mount	1.25 mm Long Motor Key L -25	35
Short Motor Mount	1.25 mm Short Motor Key L-20	35
Surgical Accessories	Screwdriver	36
Surgical Accessories	Ratchet Torque 10-45 Ncm	36
Surgical Accessories	Ratchet Wrench	36
Surgical Accessories	Implant Sit & Gingival Depth Measure	36
Parallel and Depth Guides	Parallel Pin Long L - 16	36
Parallel and Depth Guides	Parallel Pin Short L- 10	36
Parallel and Depth Guides	Parallel Guide L - 22	36



Distributed by:



BHI products
are cleared for
marketing
in the USA

2, Hamal st. P.O.B 1063
Industrial park, Afula
1857107, Israel
Tel: +972 -4 - 6094458
Fax: +972- 4 - 6597812
info@bh-implants.com
www.bh-implants.com

CE
0483